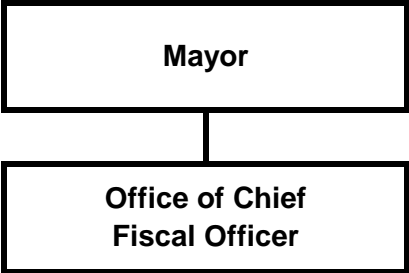

OFFICE OF CHIEF FISCAL OFFICER



2007 Updated General Government Operating Budget

Office of Chief Fiscal Officer

Resource Plan

Description	2006 Revised	2007 Approved	2007 Updated
Financial Summary			
Chief Fiscal Officer	\$ 681,370	\$ 694,940	\$ 699,390
Operating Cost	681,370	694,940	699,390
Add Debt Service	-	-	-
Direct Organization Cost	681,370	694,940	699,390
Charges From/(To) Others	(231,370)	(239,650)	(249,390)
Function Cost	450,000	455,290	450,000
Less Program Revenues	-	-	-
Net Program Cost	\$ 450,000	\$ 455,290	\$ 450,000
Personnel Summary			
Full-Time Employees	2	2	2
Part-Time Employees	-	-	-
Temporary Employees	-	-	-
Total Employees	2	2	2
Resource Costs by Category			
Personal Services	\$ 216,800	\$ 231,570	\$ 234,820
Supplies	3,000	3,000	3,000
Other Services *	461,570	460,370	461,570
Depreciation & Amortization	-	-	-
Capital Outlay	-	-	-
Total Direct Cost	681,370	694,940	699,390
Less Vacancy Factor	-	-	-
Add Debt Service	-	-	-
Total Direct Organization Cost	\$ 681,370	\$ 694,940	\$ 699,390
* Travel for this department included in the Other Services category	\$ 5,000	\$ 5,000	\$ 5,000

2007 Updated General Government Operating Budget

Office of Chief Fiscal Officer

Reconciliation From 2006 Revised Budget to 2007 Updated Budget

	<u>Direct Costs</u>	<u>Positions</u>		
		<u>FT</u>	<u>PT</u>	<u>T</u>
<i>2006 Revised Budget</i>	\$ 681,370	2		
<i>2006 One-Time Requirements</i>				
- None				
<i>Debt Service Changes - Not Applicable</i>				
<i>Changes in Existing Programs for 2007</i>				
- Salary and benefits adjustments	18,020			
<i>2007 Continuation Level</i>	\$ 699,390	2	-	-
<i>Transfers (To)/ From Other Agencies</i>				
- None				
<i>2007 Program/Funding Changes</i>				
- None				
<i>2007 Updated Budget</i>	<u>\$ 699,390</u>	<u>2</u>	<u>-</u>	<u>-</u>